

CTM MARINE AIR CONDITIONING PUMP

PM1000A - Part Number: 40112P

PM1000AH - Part Number: 40212P



ctm-marine.com

1000GPH



DESCRIPTION:

The PM1000 is magnetically driven pump with no shaft seal and the motor is Open Drop Proof (ODP). The hardened Carbon bushing allows for extended run dry time without any damage to the pump head. See the parts diagram for assembly instructions. Impeller may be trimmed to modify flows or compensate for liquids of higher viscosity. For technical assistance, please contact CTM Marine at 866-317-5257.

OPERATION:

The pump is not self-priming and requires a flooded suction. The pump has run dry and thermal overload protection.

For technical assistance contact CTM Marine at: info@ctm-marine.com

ELECTRICAL:

PM1000 is 115 & 230 Volt. 1 Phase. All cords are 6 feet in length and are U.L. LISTED 18/3 wire. The motors are rated as continuous duty.

LIMITED WARRANTY:

CTM Marine Pumps are guaranteed only against defects in workmanship or materials for a period of one year from date of manufacture while pumping water.

NOTES:

All specifications and flow curves are based on pumping water.

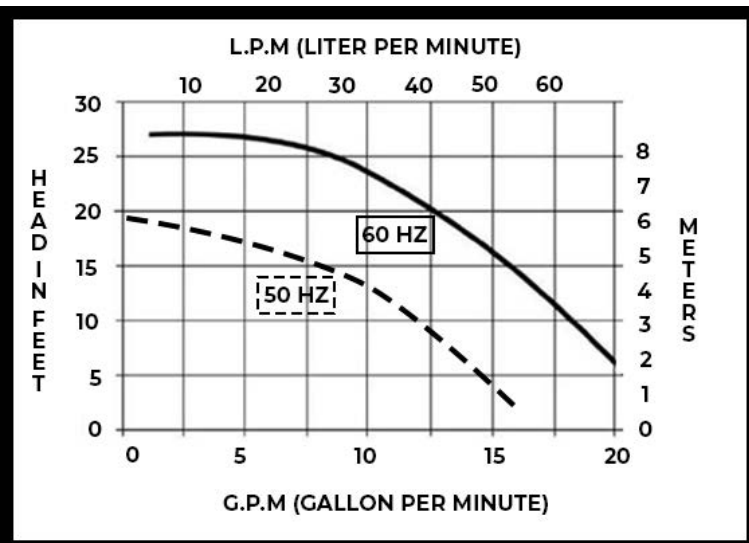
SCAN OR CLICK
FOR INSTALLATION VIDEO



CTM MARINE LLC

Miami, Florida 33172

P: 866-317-5257 E: info@ctm-marine.com



MECHANICAL SPECIFICATIONS

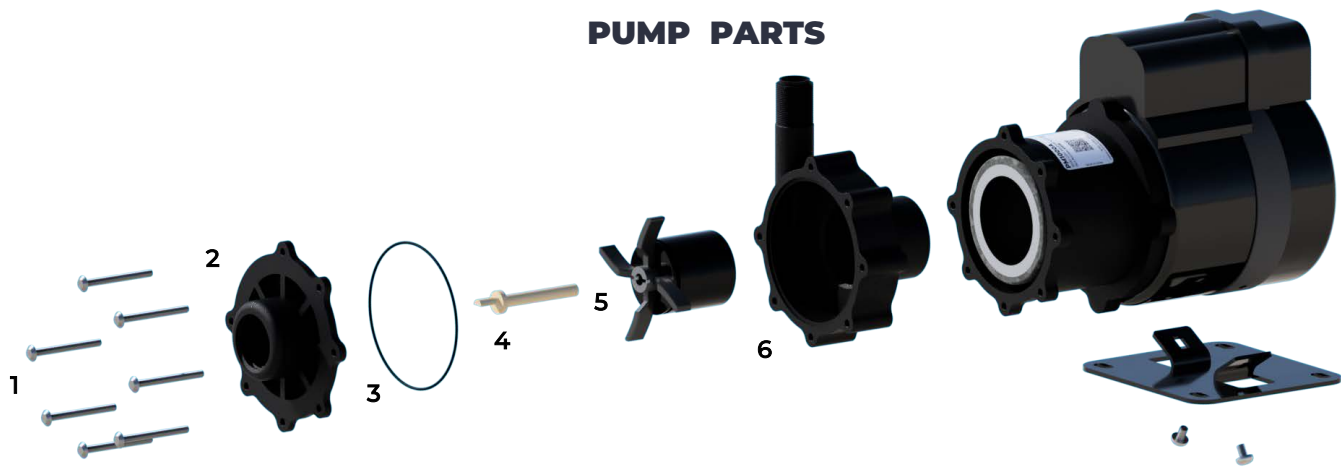
MODULE TYPE	60 Hz	50 Hz
Max Flow	17.2 GPM N/A LPM	N/A GPM 54.8LPM
Max Head	27(11.7) FT (PSI) N/A M	N/A FT (PSI) 6 M
Max Internal Pressure	50 PSI 3.4 BAR	50 PSI 3.4 BAR
Max Liquid Temperature	130°F 54°C	130°F 54°C
Packed Weight	17.70 LB 8.02 KG	17.70 LB 8.02 KG
Inlet	1" FPT	1" FPT
Outlet	1/2" MPT	1/2" MPT

ELECTRICAL SPECIFICATIONS

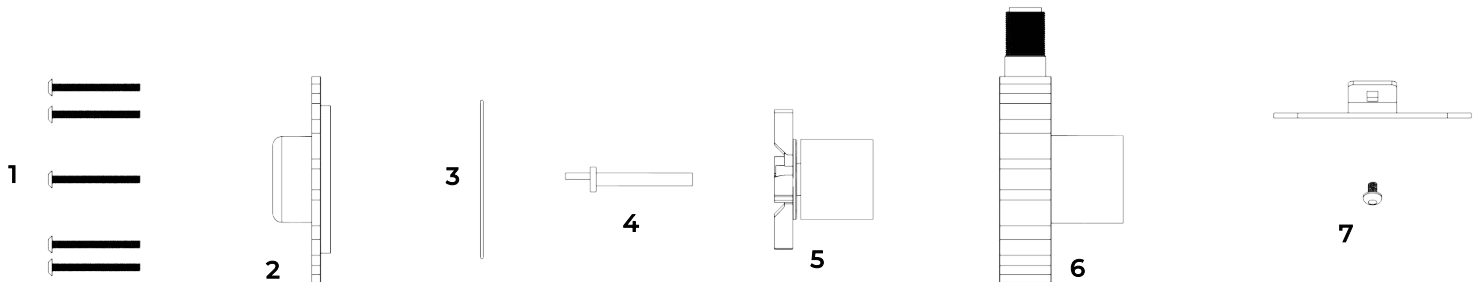
MODULE TYPE	60 Hz		50 Hz	
Voltage	115	230	115	230
Phase	1	1	1	1
Watts	216	207		147
Amps	1.6	0.9		1.2
HP/kW	1/8	1/8		0.093
RPM	3450	3450		2850

PUMP DIMENSIONS	INCHES	CENTIMETERS
Height	6.18	15.70
Width	4.37	11.10
Length	9.25	23.50

PUMP PARTS



DESCRIPTION	PART NUMBER	INCLUDED ITEMS
PM1000 - Wet End Kit Motor and body magnet not included	40018P	1 - Screws
		2 - Front Cover
		3 - O-Ring
		4 - Washer & Shaft
		5 - Impeller
		6 - Rear Housing



PUMP DRAWING

