

CTM MARINE AIR CONDITIONING PUMP

PM500L - Part Number: 40111P

PM500LH - Part Number: 40211P



ctm-marine.com

500GPH



DESCRIPTION:

The PM500 is magnetically driven pump, with no shaft seal. The pump is epoxy encapsulated, which allows the PM pump to run fully submerged in many liquids or in open air for complete moisture protection. When re-assembling the pump for service, make sure all "O" Rings are properly seated. See the repair parts list for a breakdown of replacement parts.

OPERATION:

The pump is not self-priming and requires flooded suction. The pump has run dry and thermal overload protection. In a run dry situation the pump will shut down. Simply let it cool down or hose it down to assist in the cooling.

For technical assistance contact CTM Marine at: info@ctm-marine.com

ELECTRICAL:

PM 500 is 115 & 230 Volt. 1 Phase. All cords are 6 feet in length and are U.L. LISTED 18/3 wire. The motors are rated as continuous duty.

ISO8846 MARINE IGNITION PROTECTED NMMA, USCG and SAE J1171 STANDARDS

LIMITED WARRANTY:

CTM Marine Pumps are guaranteed only against defects in workmanship or materials for a period of one year from date of manufacture while pumping water.

NOTES:

All specifications and flow curves are based on pumping water.

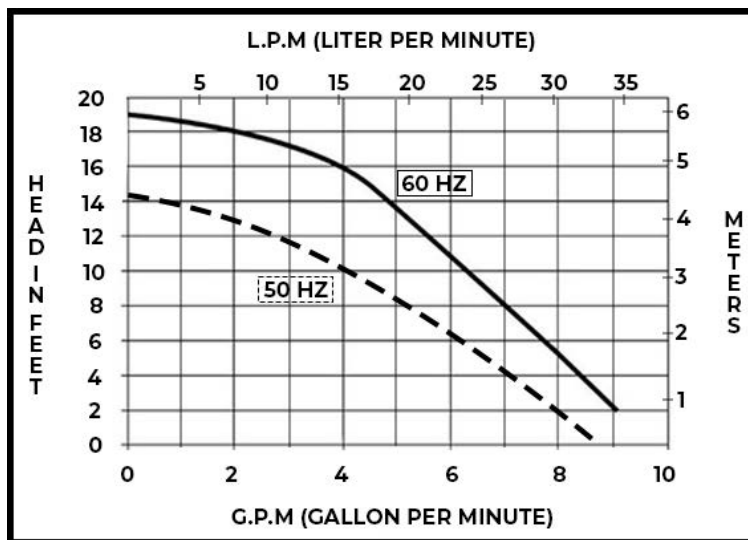
**SCAN OR CLICK
FOR INSTALLATION VIDEOS**



CTM MARINE LLC

Miami, Florida 33172

P: 866-317-5257 E: info@ctm-marine.com



MECHANICAL SPECIFICATIONS

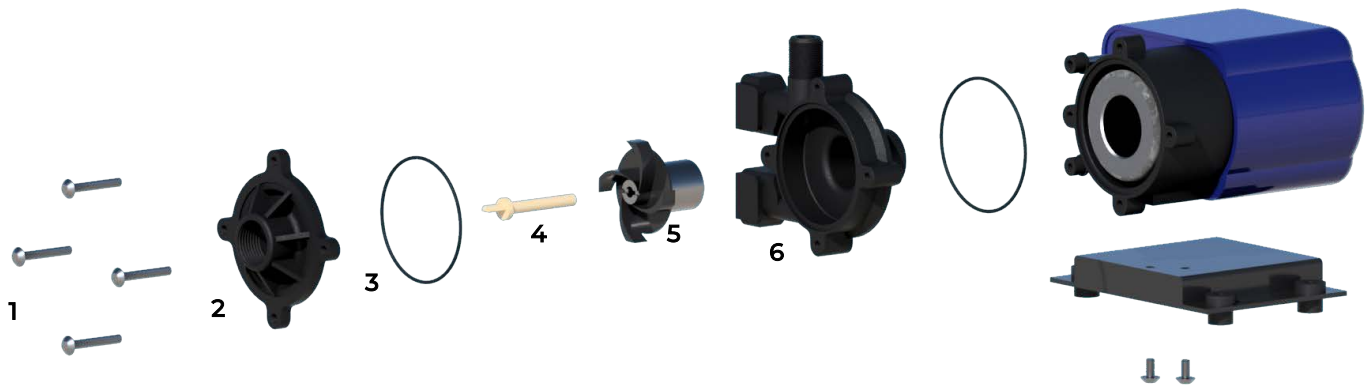
MODULE TYPE	60 Hz	50 Hz
Max Flow	8.5 GPM N/A LPM	N/A GPM 31 LPM
Max Head	19 (8.2) FT (PSI) N/A M	N/A FT (PSI) 4.3 M
Max Internal Pressure	25 PSI 1.7 BAR	25 PSI 1.7 BAR
Max Liquid Temperature	130°F 54°C	130°F 54°C
Packed Weight	8.5 LB 3.85 KG	8.5 LB 3.85 KG
Inlet	3/4" FPT	3/4" FPT
Outlet	1/2" MPT	1/2" MPT

ELECTRICAL SPECIFICATIONS

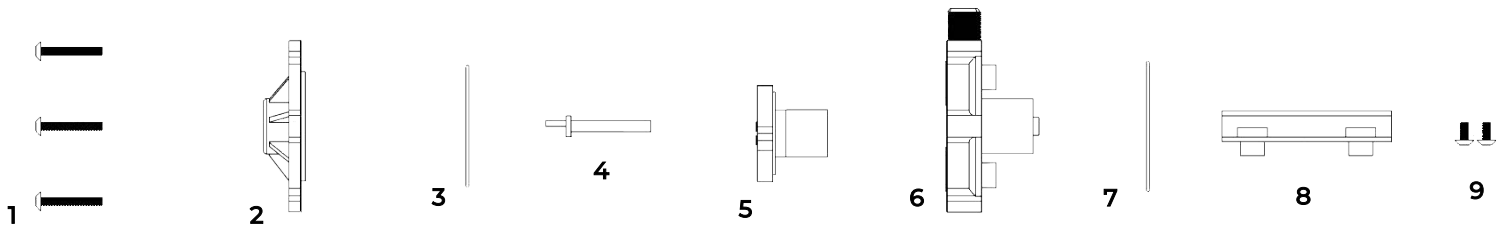
MODULE TYPE	60 Hz		50 Hz	
Voltage	115	230	115	230
Phase	1	1	1	1
Watts	120	120	137	100
Amps	2.0	1.0	2.3	1.15
HP/kW	1/20	1/20	0.037	0.037
RPM	3450	3450	2850	2850

PUMP DIMENSIONS	INCHES	CENTIMETERS
Height	4.87	12.3
Width	4.80	12.2
Length	7.50	19.0

PUMP PARTS



DESCRIPTION	PART NUMBER	INCLUDED ITEMS
PM500 - Wet End Kit Motor and body magnet not included	40017P	1 - Screws
		2 - Front Cover
		3 - O-Ring
		4 - Washer & Shaft
		5 - Impeller
		6 - Rear Housing



PUMP DRAWING

