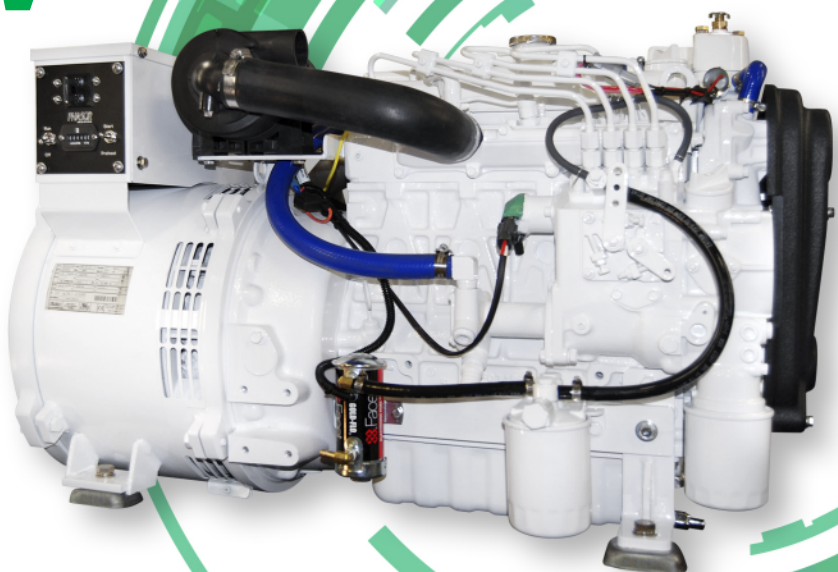


K4-12.5KW

Standard Features

- Kubota Diesel Engine
- Single bearing direct coupled brushless generator
- +/- 1% Solid-state voltage regulation
- Low 1,800 RPM operating speed
- Safety shutdown system for high coolant temperature or low lube oil pressure
- Single series circuit control system with no printed circuit boards – tinned wiring
- Freshwater double pass heat exchanger
- Water-cooled exhaust manifold with removable integral Cupro-Nickel heat exchanger core
- Zinc anode in heat exchanger
- Stainless Steel exhaust elbow cast
- Gear-driven raw water pump
- 4-Point isolation mounts S/S
- Molded blue silicone water hoses with Stainless Steel AWAB clamps
- Air intake Cleaner / Silencer
- Spin-on lube filter
- Secondary 5 Micron fuel filter
- Self-bleed fuel system
- USCG approved fuel lines
- Electric fuel transfer pump
- Forged brass oil drain valve with safety lock
- Awl-Craft 2000 urethane finish
- Circuit breaker - single phase
- Belt guard
- 5-Year Limited Warranty



Specifications

Kubota Model	V1505-E4BG
Cylinders	4
Cu. In. Displacement	91
Bore x Stroke	3.07 x 3.09 (in.)
Dims (LxWxH)	34.5 x 18 x 22.5 (in.)
Enclosure Dims (LxWxH)	38 x 22 x 25.5 (in.)
Weight (lbs.)	567
R.P.M.	1,800
Output (volts)	120/240
Output (amps)	104/52
Output (watts)	12,500
Exhaust Dia.	2 in.
Raw water Dia.	3/4 in.
Fuel Line Dia.	5/16 in.
Return Line Dia.	3/16 in.

Specifications are subject to change without notice

Optional Equipment

- Start / Stop – 20 ft. harness
- Custom remote engine / generator instrument panels
- DC Gauge panel – 20 ft. harness
- Stainless Steel drip pan
- 24 Volt starting system
- 50 cycle output
- Dedicated motor starting generator windings
- Sound insulation blanket
- Powder coated aluminum enclosure
- Remote oil filter kits
- Custom chrome packages
- Spare parts kit



2880 Hammondville Road • Pompano Beach, FL 33069
Ph: 954-979-5899 • Fax: 954-979-4349
info@phasormarine.com • www.phasormarine.com

rev020816